

PC-based visualisation
CX-Supervisor

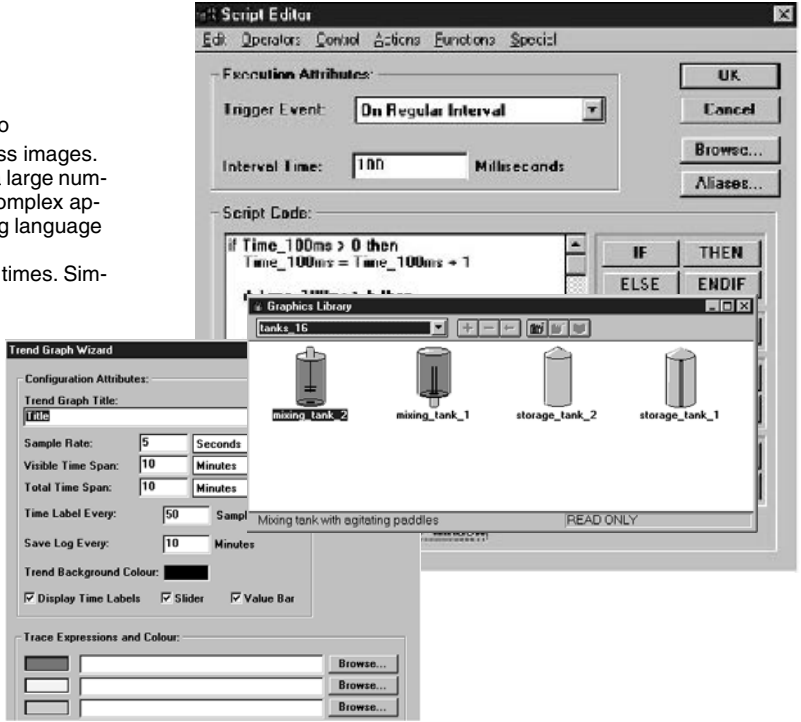
SCADA for your machine

PC based HMI for demanding machine applications

Key features

Process visualising with outstanding price/performance ratio

- Powerful functions can be used to create animated process images.
- Simple applications can be created rapidly with the aid of a large number of predefined functions and libraries, and even very complex applications can be generated with the powerful programming language (Scripts).
- A clear, straightforward structure minimises familiarisation times. Simple, intuitive handling and high user friendliness
- Versatile test and documentation facilities.
- OPC allows connections to Version 2 OPC Servers.
- Database support for SQL, ODBC, MS Access, MS Excel, dBase, CSV and more.
- Importing ActiveX® components makes it possible to create flexible applications and extend functionality.



General Data

	Specification
Number of process points	8,000
Number of process images	No limit
Supported PLC systems	CS1, CJ1, SRM1, CPM, C20, CXxK, CXxH, C20P, CQM1, CQM1H, C200H/-HS/-HX/-HG/-HEC500, C1000H, C2000H, CV/CVM1
Supported OMRON controllers	E5AF-A/-H, E5EF-A/-H/-BA/-BAH, E5AJ-A, E5AK-A/-PRR, E5EK-A/-PRR, E5AX-LA/-MA/-PRR
Communication	<ul style="list-style-type: none"> • Peripheral port and SYSMAC NET Host Link interface via COMx • SYSMAC Link • Controller Link • Ethernet • Modem • DDE • OPC (Client) • ActiveX®

Product Overview

Program	Description	Model code
	Developmet package	CX-SUPERVISOR-VX.XX
	Runtime CD + runtime token (3.5' floppy disc)	CX-SUPERVISOR-RUN-TOK-Vx.xx
	Runtime CD + runtime dongle (parallel port)	CX-SUPERVISOR- RUN-HL-Vx.xx
	Runtime CD + USB key	CX-SUPERVISOR-RUN-USB-Vx.xx
	Runtime token only (3.5' floppy disc)	CX-SUPERVISOR-TOK-Vx.xx
	Runtime dongle only (parallel port)	CX-SUPERVISOR-HL-Vx.xx
	Runtime USB key only	CX-SUPERVISOR-USB-Vx.xx
	Demo version limited to 2 hours runtime.	CX-SUPERVISOR-DEMO2-Vx.xx

Software

Functions

Programming types	<ul style="list-style-type: none"> • Predefined functions and graphic elements (libraries, animation editor) • Script language for solving complex control and data processing tasks • VBA and JAVA scripts can be imported • Active components can be incorporated with the ActiveX® property browser • HTML texts can be imported/displayed with Internet Explorer functionality (V.5.0 or higher)
Edit options	<p>Toolbars for creating and aligning graphic elements; libraries with a wide choice of predefined modules (Wizard function)</p> <p>Project Editor: Manages the process images you have created</p> <p>Points Editor: Creates and manages process points and internal variables</p> <p>Animation Editor: Assigns display variables, colour changes, movement etc. to graphic objects</p> <p>Alarm Editor: Assigns alarm limits/ranges to process points and internal variables</p> <p>Data block Editor: Creates and manages Data block files, online downloading to the PLC</p> <p>Script Editor: A powerful programming language with graphic and mathematical functions and commands for program control, file management etc.</p>
Mathematical functions	trigonometric, logarithmic and arithmetic functions
Math operators	+, -, *, /, %, =, <, >, <=, >=, !=, ==
Logical operations	AND, OR, NOT, TRUE, FALSE
Conditional program execution	IF-THEN-ELSE/ELSEIF, SELECT CASE
Display functions	Variables, text, date, time, comprehensive object animation options
Graphic functions	Straight line, rectangle, polygon, circle (outline or filled-in); bar chart, trend chart, scatter graph, display instruments, bitmap, OLE
Special functions	Keyboard input, write/read CSV file, program launch, Data block manager, alarms, password entry/verification with different authorisation levels, DDE/NetDDE/COM/DCOM/OPC-link to other WINDOWS applications, data logging, parameter transfer with ActiveX® events.
Documentation	<ul style="list-style-type: none"> • User-definable comments on all process points and internal variables • Printout of process images, variables lists, scripts etc.
Test options	Error Logger, Debugger

PC-Based visualization

Computer hardware and software requirements

Supported operating systems	Windows 2000, XP and NT4.0 (Service Pack 5 and later)	
Processor	Min. Pentium with 200 MHz or higher, Recommended 800 MHz or higher with Multithreading.	
Memory requirements	Hard disk	40 MB of free memory space
	RAM	Min. 64 MB, 256 MB recommended
Screen	VGA graphic, SVGA graphic with 1024x768 or higher recommended	
Peripheral connections ¹	1.44 MB disk drive COMx serial port Mouse Parallel printer port (any WINDOWS supported printer)	

¹ Peripheral connection only needed for CX-Supervisor

Ordering Information

Part number	Description
CX-SUPERVISOR-VX.XX	Developmet package
CX-SUPERVISOR-RUN-TOK-Vx.xx	Runtime CD + runtime token (3.5' floppy disc)
CX-SUPERVISOR- RUN-HL-Vx.xx	Runtime CD + runtime dongle (parallel port)
CX-SUPERVISOR-RUN-USB-Vx.xx	Runtime CD + USB key
CX-SUPERVISOR-TOK-Vx.xx	Runtime token onlonly (3.5' floppy disc)
CX-SUPERVISOR-HL-Vx.xx	Runtime dongle only (parallel port)
CX-SUPERVISOR-USB-Vx.xx	Runtime USB key only
CX-SUPERVISOR-DEMO2-Vx.xx	Demo version limited to 2 hours runtime.
CX-LITE-EVx.xx-S	Microsoft Excel interface to serial connection only single application
CX-LITE-E03Vx.xx-S	Microsoft Excel interface to serial connection 3 applications
CX-LITE-E10Vx.xx-S	Microsoft Excel interface to serial connection 10 application
CX-LITE-EVx.xx-N	Microsoft Excel interface to serial+ network connection single application
CX-LITE-E03Vx.xx-N	Microsoft Excel interface to serial + network connection 3 applications
CX-LITE-E10Vx.xx-N	Microsoft Excel interface to serial + network connection 10 application
CX-OPC-EVx.xx-S	OPC server to serial connection single application
CX-OPC-E03Vx.xx-S	OPC server to serial connection 3 applications
CX-OPC-E10Vx.xx-S	OPC server to serial connection 10 application
CX-OPC-EVx.xx-N	OPC server to serial+ network connection single application
CX-OPC-E03Vx.xx-N	OPC server to serial + network connection 3 applications
CX-OPC-E10Vx.xx-N	OPC server to serial + network connection 10 application

Software